

Packaging System

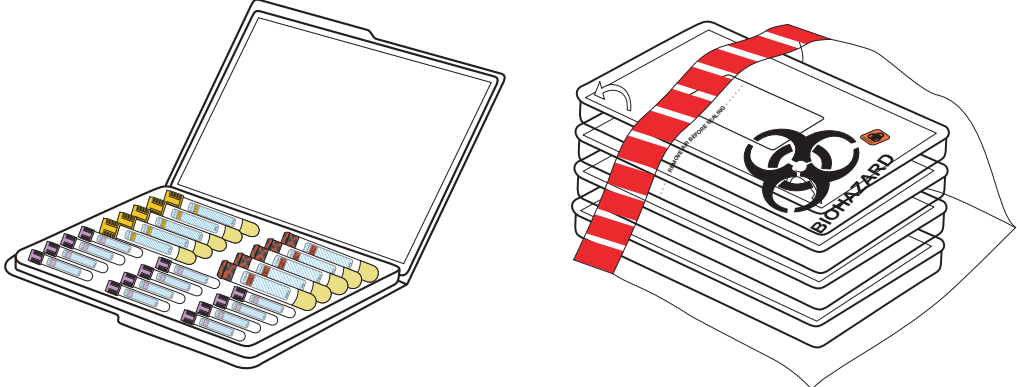
Medium Shipper*

Small Shipper

1. Place ice packs required for shipment into freezer **at least 24 hours** prior to shipment.

2. Assemble shipping box folding bottom side panels inward. Bring sealing panel forward, remove adhesive strip and fold flap up to seal.

3. Place tubes into tray(s).



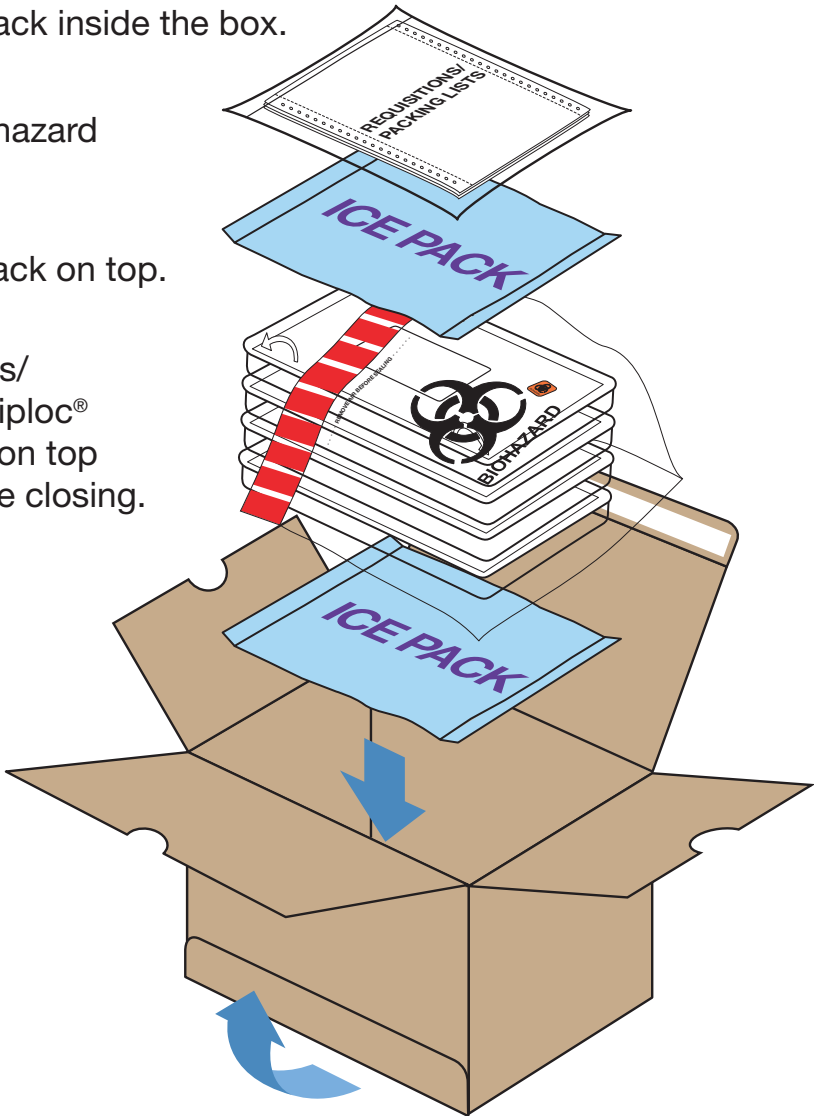
4. Place up to four trays (medium box) into the medium clear biohazard bag. Be sure to write your Facility/Account number on the bag. Do not write on tray(s).

5. Lay one frozen ice pack inside the box.

6. Insert the sealed biohazard bag into the box.

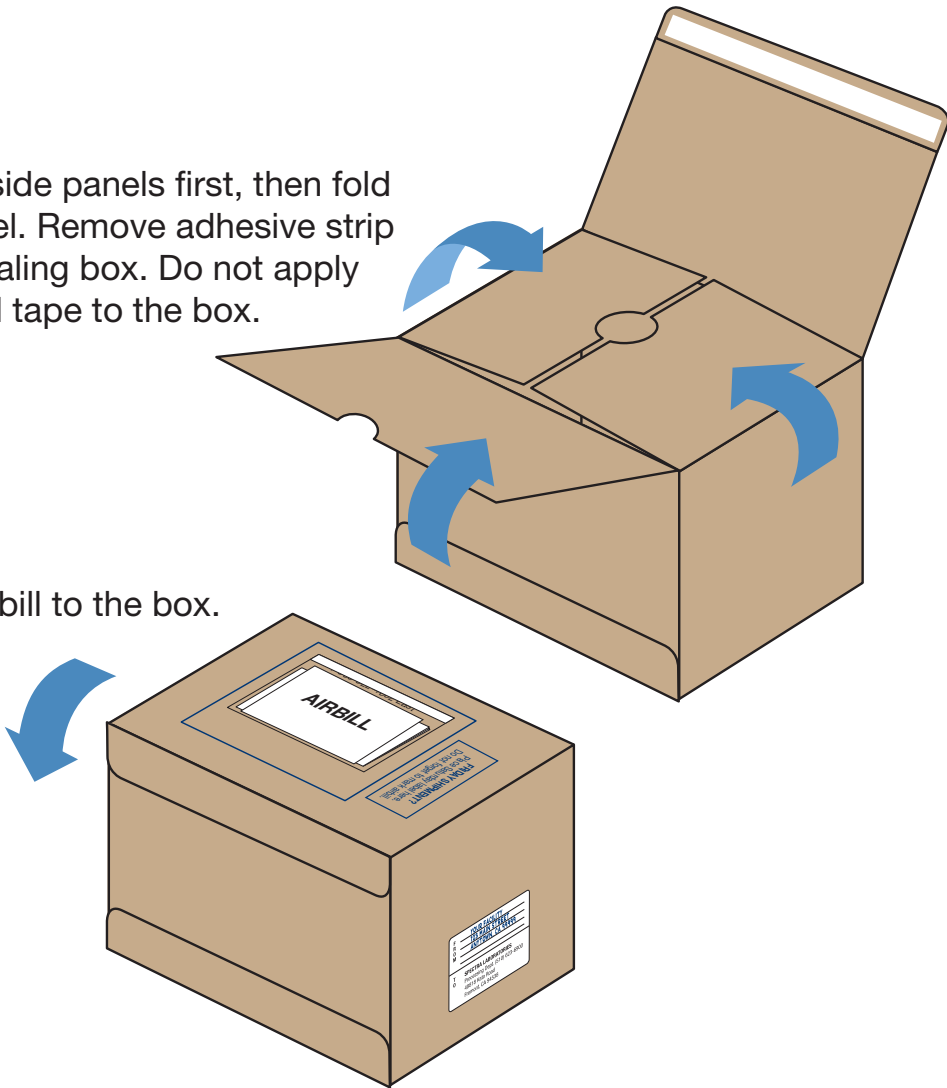
7. Lay one frozen ice pack on top.

8. Insert any requisitions/packing lists into a Ziploc® bag and place them on top of the ice pack before closing.



9. Fold the side panels first, then fold front panel. Remove adhesive strip before sealing box. Do not apply additional tape to the box.

10. Apply airbill to the box.



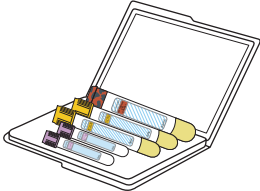
11. Don't forget to mark the package for "Saturday Delivery" if shipping on Friday.

* A jumbo shipping box is available for those instances when shipping more than four trays—such as for quarterly draws or for those facilities with more than 150 patients. Instructions for assembling the jumbo shipping box are the same as that for the medium shipping box. Please contact the Customer Service Department at the respective laboratory servicing your facility for additional information.

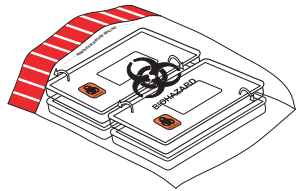
1. Place ice packs required for shipment into freezer **at least 24 hours** prior to shipment.

2. Assemble shipping box.

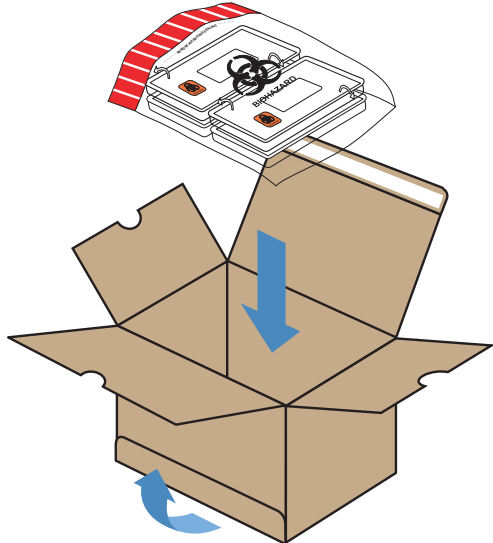
3. Place tubes into tray(s).



4. Place up to four trays into the small clear biohazard bag. Be sure to write your Facility/Account number on the bag. Do not write on tray(s).



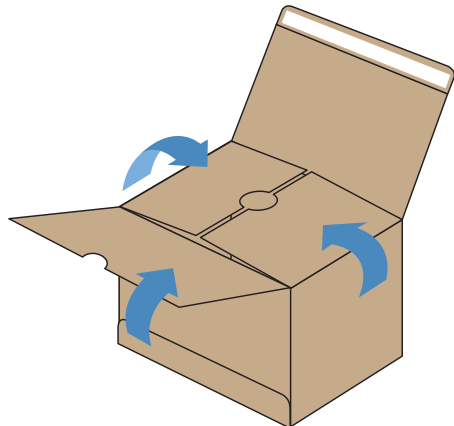
5. Insert the sealed biohazard bag into the box.



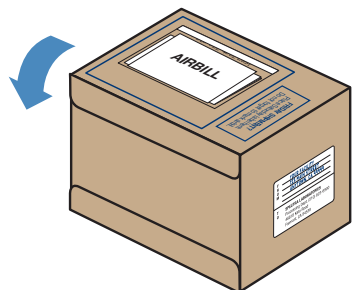
6. Lay one ice pack on top.



7. Insert any requisitions/packing lists into a Ziploc bag and place them on top of the ice pack before closing.



8. Apply airbill to the box.



9. Don't forget to mark the package for "Saturday Delivery" if shipping on Friday.