

Laboratory Procedures for Home Patients

Call your nurse at the dialysis clinic for further instructions if:

- You are not able to collect specimens on your scheduled collection date
- You observe a bad spin (see Step #6)
- You have any questions or concerns

Call your courier service for pick-up (FedEx® or UPS®) if instructed

Watch the *Quality Specimen Collection and Handling* video

1 Label Tubes (Home Dialysis staff will give them to you)

- Put label on tube right over existing label
- Place straight up and down
- Near the top of the tube



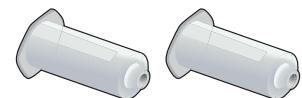
Good Label Placement



Bad Label Placement

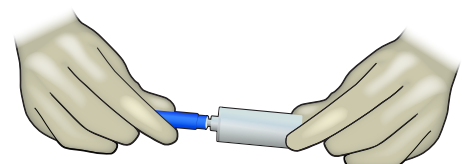
2 Get Blood Collection Supplies Together Before Treatment Begins

- Blue top adapter for collecting specimens **before** treatment
- Green top adapter for collecting specimens **after** treatment
- 2 clear needle holders (one for specimens collected before treatment; one for specimens collected after treatment)



3 Connect Adapter to Holder for Blood Collection

- Allow fistula tubing to fill completely with blood
- Attach blue top adapter to clear needle holder for collection of blood **before** treatment; attach green top adapter to needle holder for collection of blood **after** treatment
- Remove blue/green cap and insert adapter into fistula needle tubing
- Collect blood tubes (Go to Step #4)



Attachment of Adapter to
Clear Needle Holder

NOTE: Discard adapter and holder in sharps container after use.

4 Collect Blood Tubes

Before Treatment - Collect blood tubes in this order:



1 Serum Separator Tube (SST™)

- Fill tube
- Mix gently 5-10 times
- Place in tube rack for 30-60 minutes
- Spin (Go to Step #5)



2 Lavender Tube

- Fill tube
- Mix gently 5-10 times
- Refrigerate immediately

End of Treatment - Collect this tube as instructed by your Home Therapy staff:



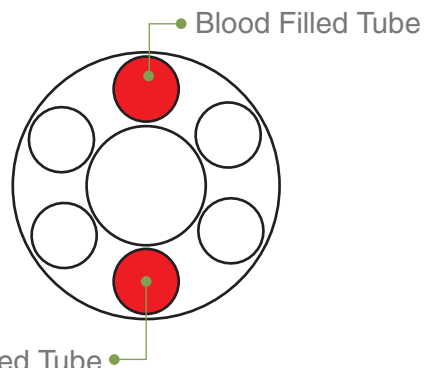
3 Yellow Tube

- Fill tube
- Mix gently 5-10 times
- Spin (Go to Step #5)

NOTE: If you are collecting additional blood tubes, refer to the *INSIST on Good Diagnostic Specimen Preparation for Quality Results* poster to determine the proper order of draw.

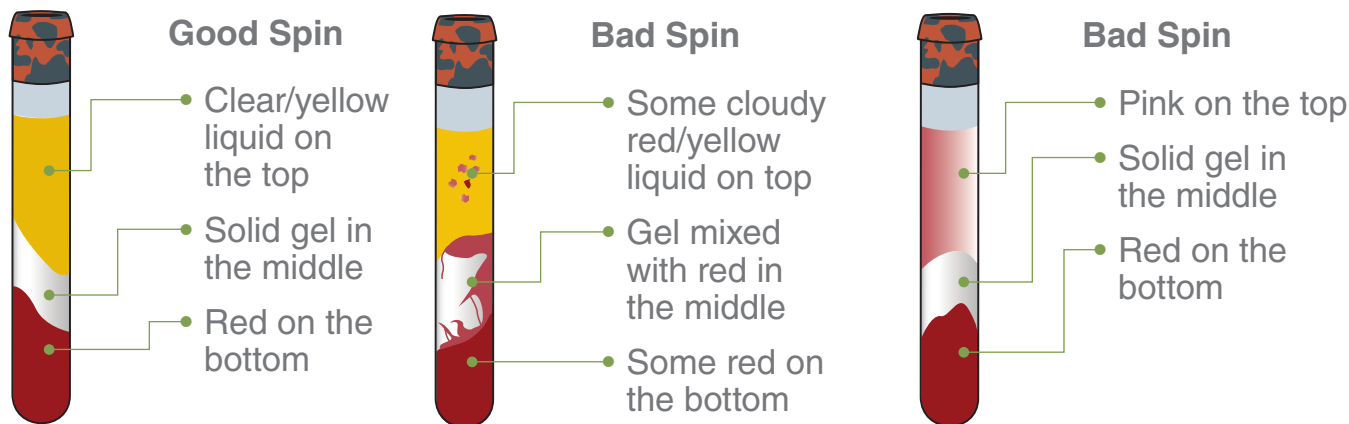
5 Spin Blood Tubes with Gel in the Bottom (DO NOT spin the lavender tube)

- Check that the blood tube has clotted
- Take one plastic tube holder out of machine
- Take the cap off of the plastic tube holder
- Put blood tube in holder
- Put plastic tube cap back on
- Put tube holder back in machine
- Put a water filled tube of the **SAME SIZE AND TYPE** in the tube holder right across from the blood tube
- Close machine and turn it on
- When machine shuts off, take blood tube out and refrigerate until ready to ship



Correct Placement of Tube in Machine

6 Check Blood Tubes

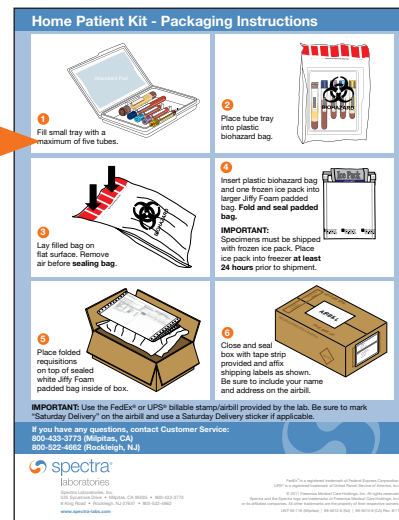


If you observe a bad spin, contact the nurse at your dialysis clinic for further instructions.

7 Ship Blood Tubes

IMPORTANT: Specimens should be stored in the refrigerator until they are ready for shipment.

- See *Home Patient Kit – Packaging Instructions*
- Use only shipping boxes provided to you by your Home Therapy staff or Spectra Laboratories
- Be sure to include completed requisitions/paperwork with your blood tubes
- Ship blood tubes on the same day as collection, or the morning following an evening collection
- Be sure to mark “Saturday Delivery” on the airbill and use a Saturday Delivery sticker if applicable



REMINDER CHECKLIST

- ☐ Call your courier service for pickup (FedEx or UPS) if instructed
- ☐ Label all tubes
- ☐ If using handwritten labels, you must include: your name, birth date, collection date, clinic name and clinic location number
- ☐ Check spinner and refrigerator for tubes before packing
- ☐ Keep two ice packs in freezer; when you use one, replace it
- ☐ Include FROZEN ice pack in the shipping box
- ☐ Include requisitions provided by your nurse in the shipping box

CALL YOUR NURSE AT:

CLINIC NAME:

CLINIC NUMBER:



Spectra Laboratories, Inc.
525 Sycamore Drive • Milpitas, CA 95035 • 800-433-3773
8 King Road • Rockleigh, NJ 07647 • 800-522-4662
www.spectra-labs.com

BD, BD logo and all other trademarks are the property of Becton, Dickinson and Company.
UPS® is a registered trademark of United Parcel Service of America, Inc.
FedEx® is a registered trademark of Federal Express Corporation.
© 2012 Fresenius Medical Care Holdings, Inc. All rights reserved.
Spectra and the Spectra logo are trademarks of Fresenius Medical Care Holdings, Inc. or its affiliated companies. All other trademarks are the property of their respective owners.

HOMEPTLABPROC Rev.10/12